

Joel W. Grossman, Ph. D. © 2003
All Rights Reserved

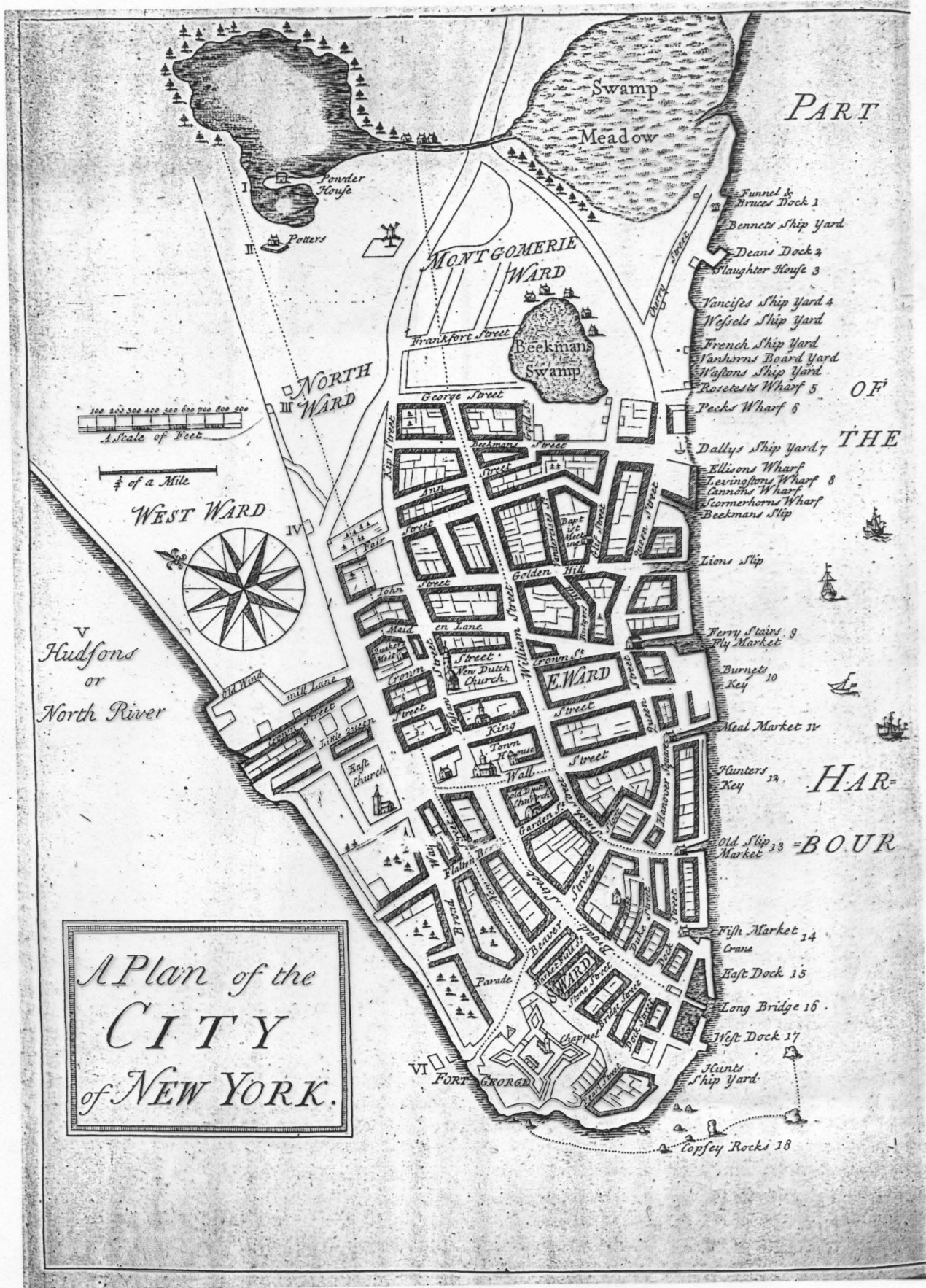
Grossman et. al. 1990

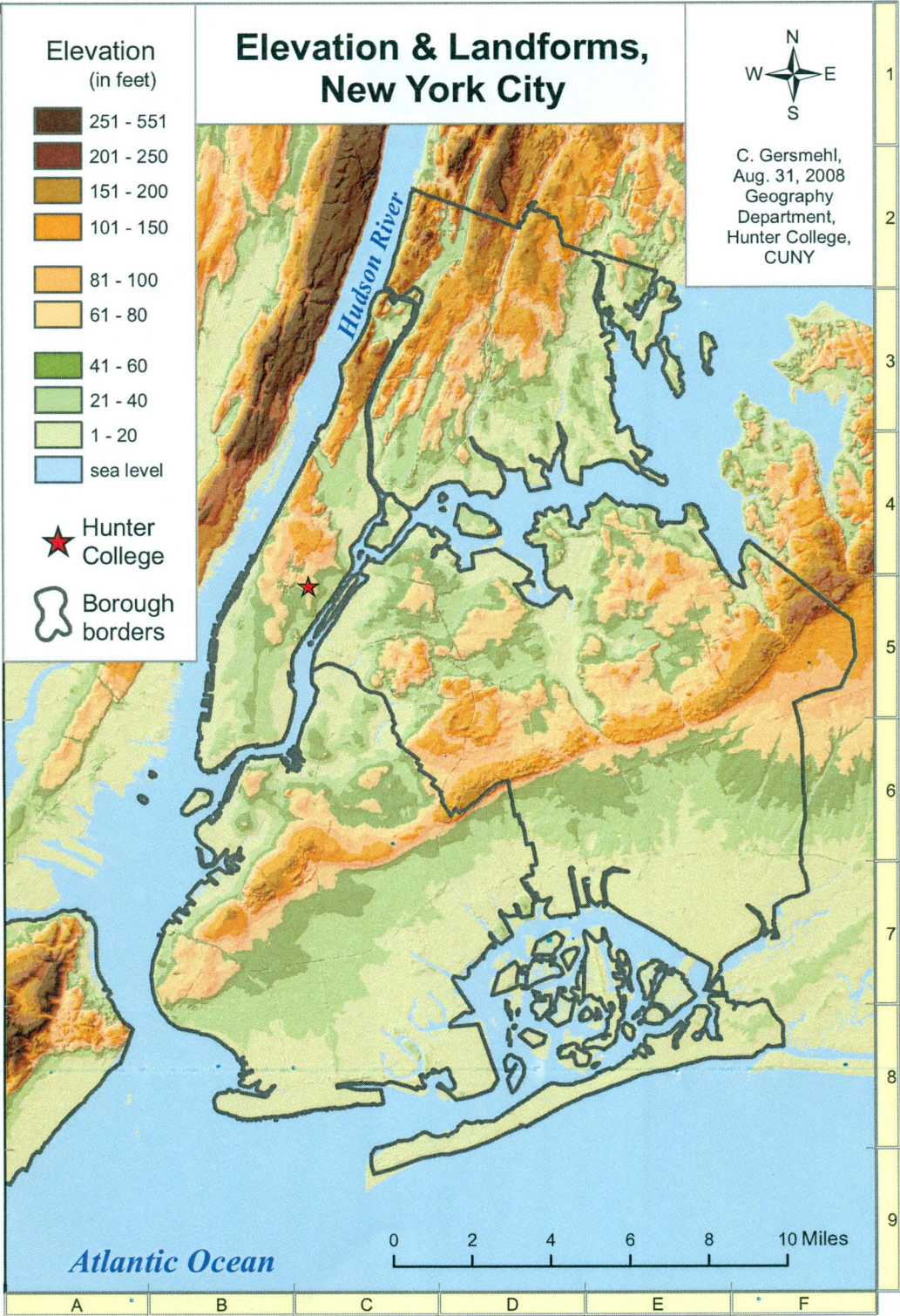
3D Computer Reconstruction of Prehistoric Manhattan -

Joel W. Grossman, Ph.D.-2002



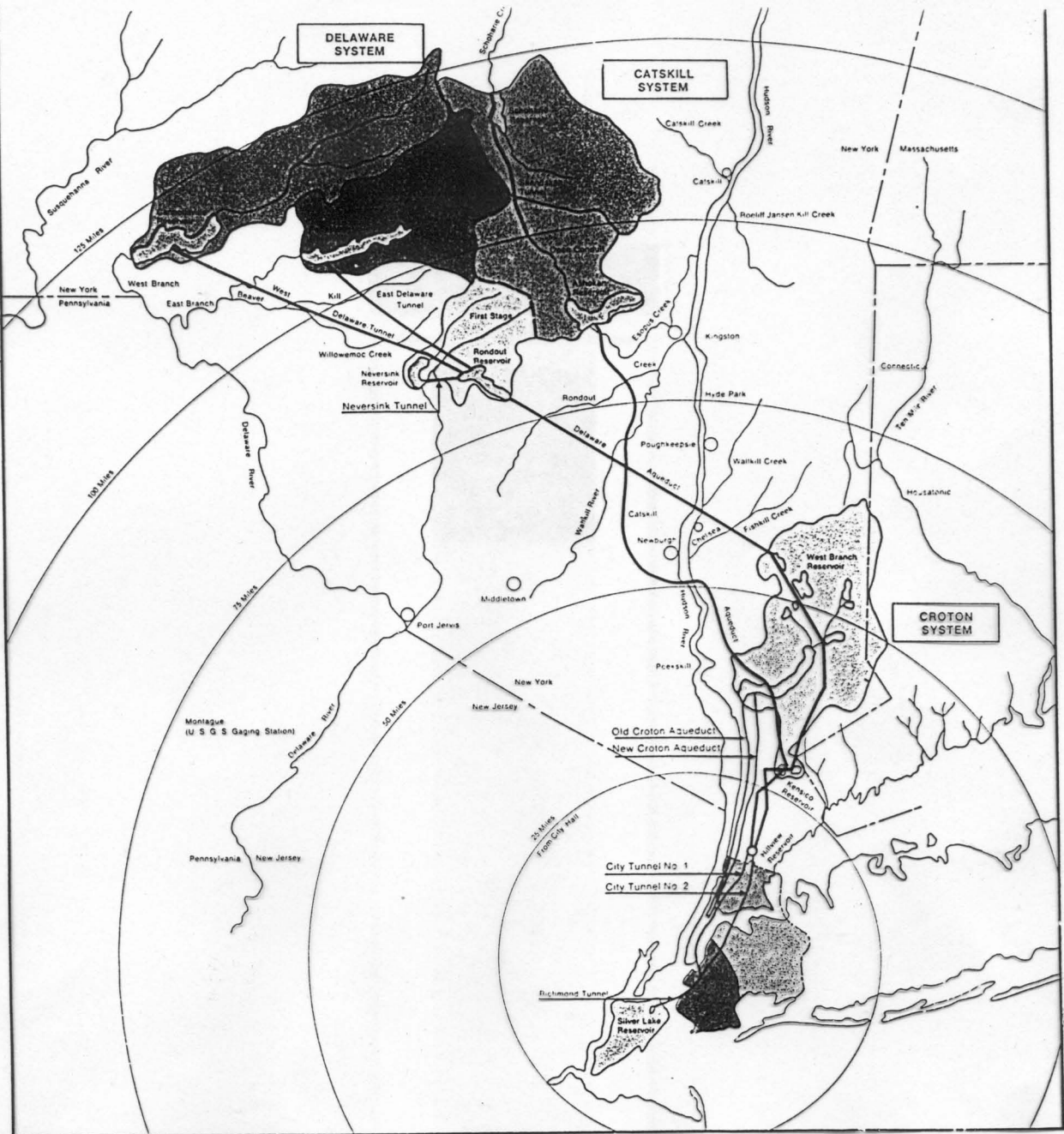
*Joel W. Grossman Ph. D. © 2003
All Rights Reserved*











Summary of Watershed Statistics				
		Dependable Yield (MGD)	Drainage Area (Square Miles)	Available Reservoir Storage (Bil. Gal.)
Grand Total — All Systems		1,395.0	1,969.3	456.6
Delaware System	Total	580*	1,010	183.0
West Branch Watershed		185	450	97.5
East Branch Watershed		225	372	143.5
Neversink Watershed		70	93	35.5
Rondout Watershed		100	95	50.0
Catskill System	Total	470	571	147.4
Schoharie Watershed		180	314	19.6
Esopus Watershed		290	257	127.8
Croton System	Total	240	375.0	95.6
West Branch System			42.9	12.1
Croton Falls System			125.7	29.1
Cross River			29.8	10.3
Balance of System			176.6	43.1
Long Island Sound System	Total	5	13.3	30.6
Bronx River				
Underground Sources	Total	35	NA	NA
Richmond Municipal Wells		5	NA	NA
Long Island Wells		30		
Private Water Companies	Total	65	NA	NA
Jamaica Water Supply Co.		55		
N.Y. Water Service Corp.		10		

*Adopted Yield based on required releases into the Delaware River.
 NA — Not Available

City Tunnel No.
 City Tunnel No.
 City Tunnel No.
 Jerome Park R.
 Central Park R.
 Silverlake Rese





HUDSON

EAST

Note. The small figures at the corners of the blocks show the No. of the House in that Street on which they are written.





3D GIS Reconstruction of 17th Century Manhattan

Joel W. Grossman, Ph.D. - 2002

Franquelin - 1693

**3D Topography
Viele 1865 + Franquelin 1693**

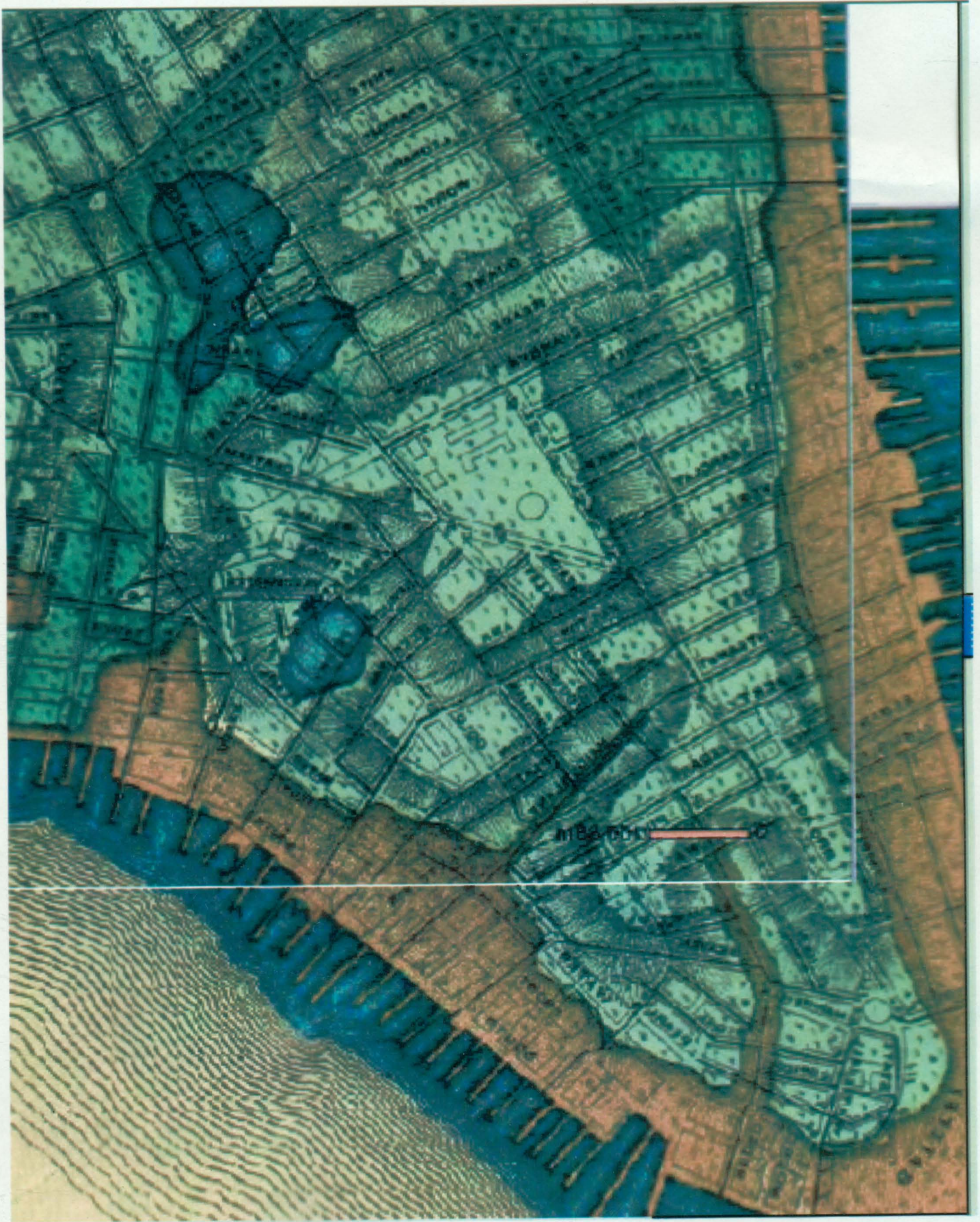
Viele - 1865





HILLS'S MAP, 17

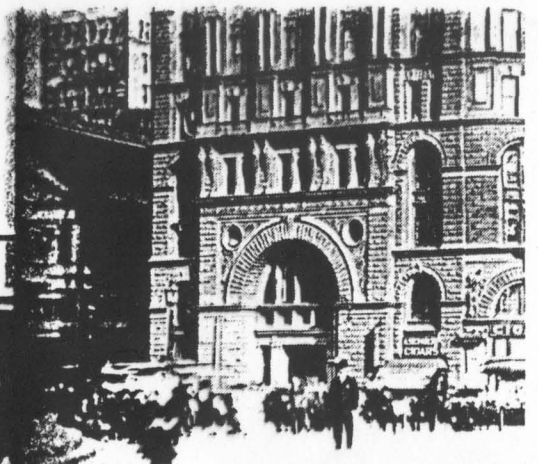
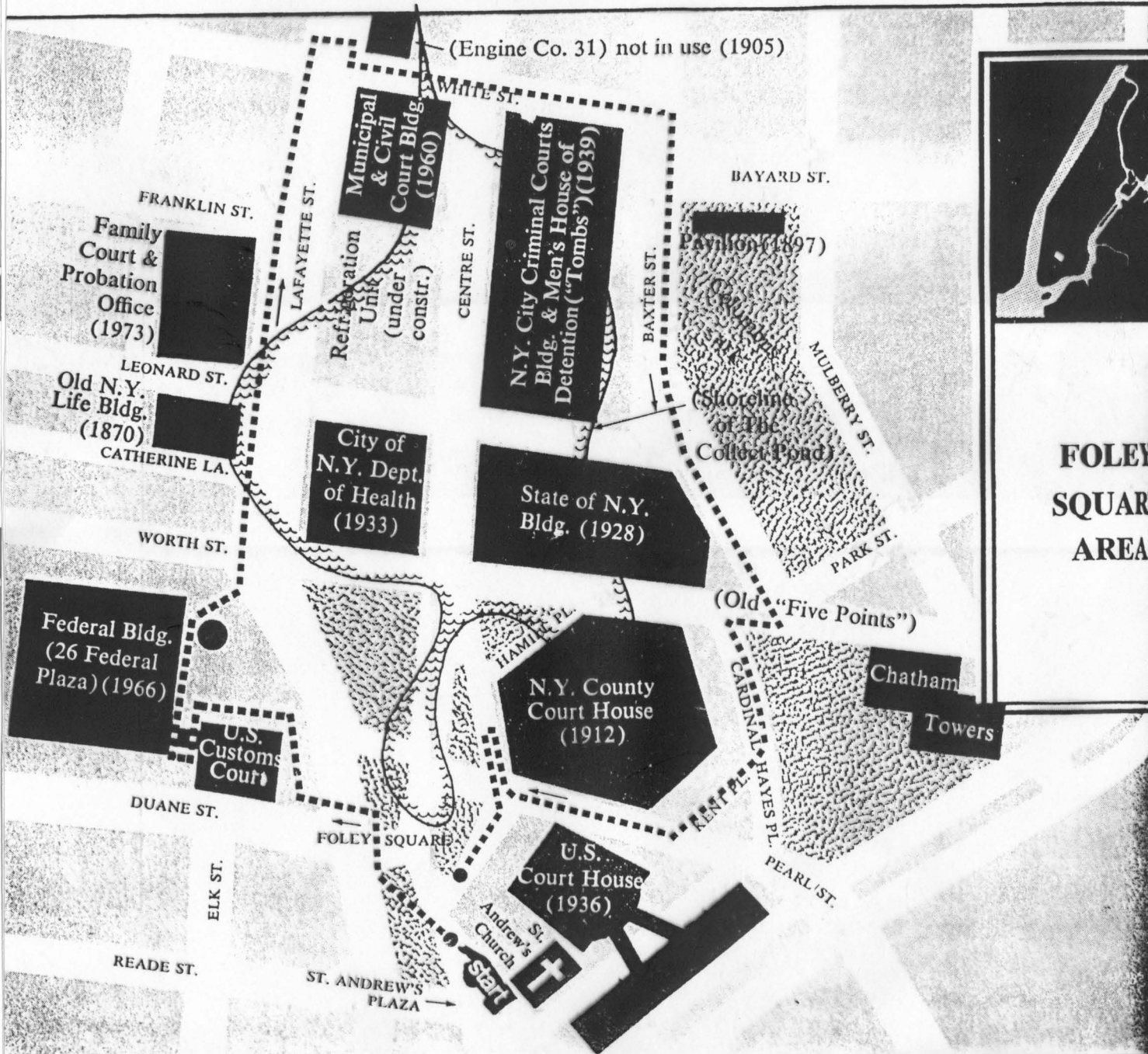
Return to Brooklyn





crowding at the island prison. The "Tombs" was designed by Harvey Wiley Corbell.

In the area encompassed by Franklin, Worth, Centre, and Lafayette streets was a small pond known as the Collect. A source of fresh water during colonial



The most notorious section of and den of criminals called I see the crossing of three of the of the City of New York)

