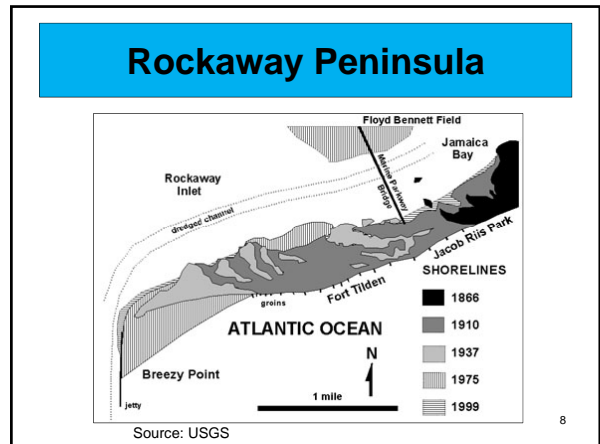
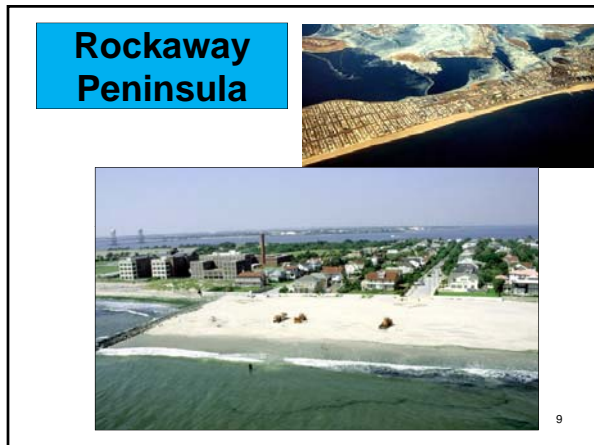


7



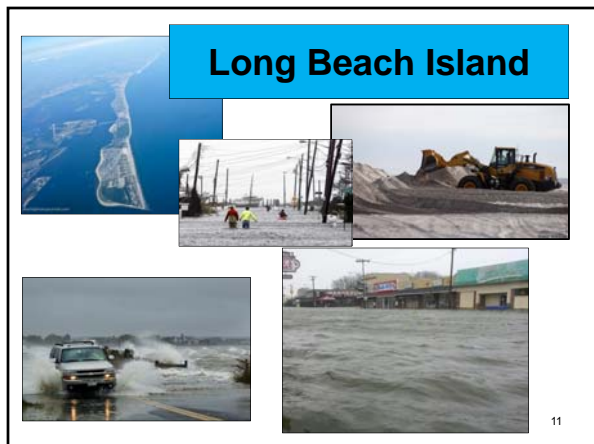
8



9



10



11



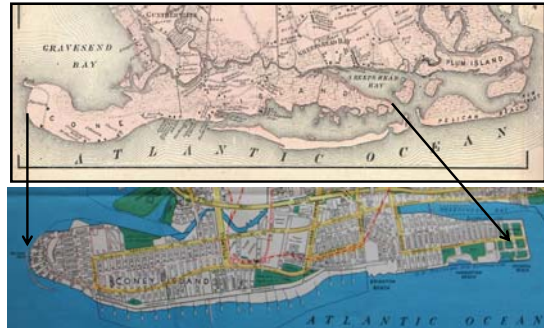
12

Southern Brooklyn - 1873



13

Coney Island 1873 and 1976

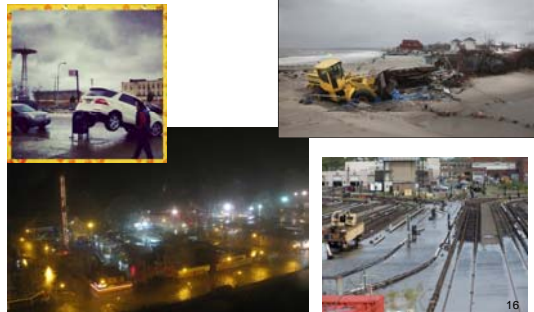


Coney Island: Human impact



15

Storm Damage on Coney Island

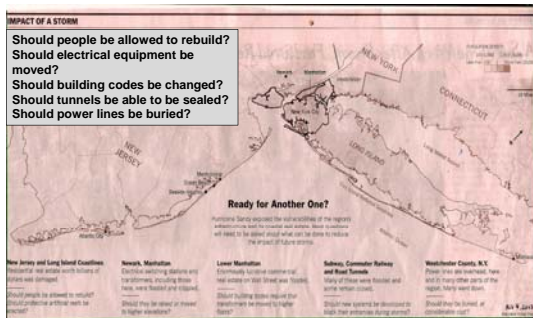


16

Dealing with Similar Storms

IMPACT OF A STORM

- Should people be allowed to rebuild?
- Should electrical equipment be moved?
- Should building codes be changed?
- Should tunnels be able to be sealed?
- Should power lines be buried?



17